



305/28 Warayama Place Rozelle NSW

1 1 1

Situated within the 'Balmain Shores' waterfront complex, this one bedroom apartment offers generous open plan living spaces and features updated interiors, including timber flooring, fully renovated bathroom, LED lighting and air-conditioning.

Residents have access to resort style amenities including a modern well-equipped gymnasium, heated indoor lap pool, outdoor plunge pool, spa & saunas. It's also on the door step of Bridgewater Park and the popular 'Bay Run' offering over 8kms of walkways/cycleways along the harbour foreshore, and is only a short stroll from local cafes & eateries, Fruitologist and express public transport.

Ideal first home, city bolt hole, or ready made investment currently leased at \$675 p/w until May 2024.

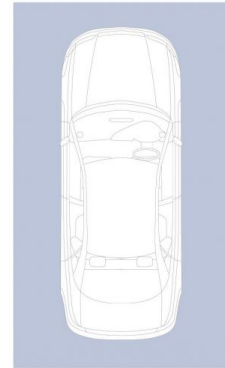
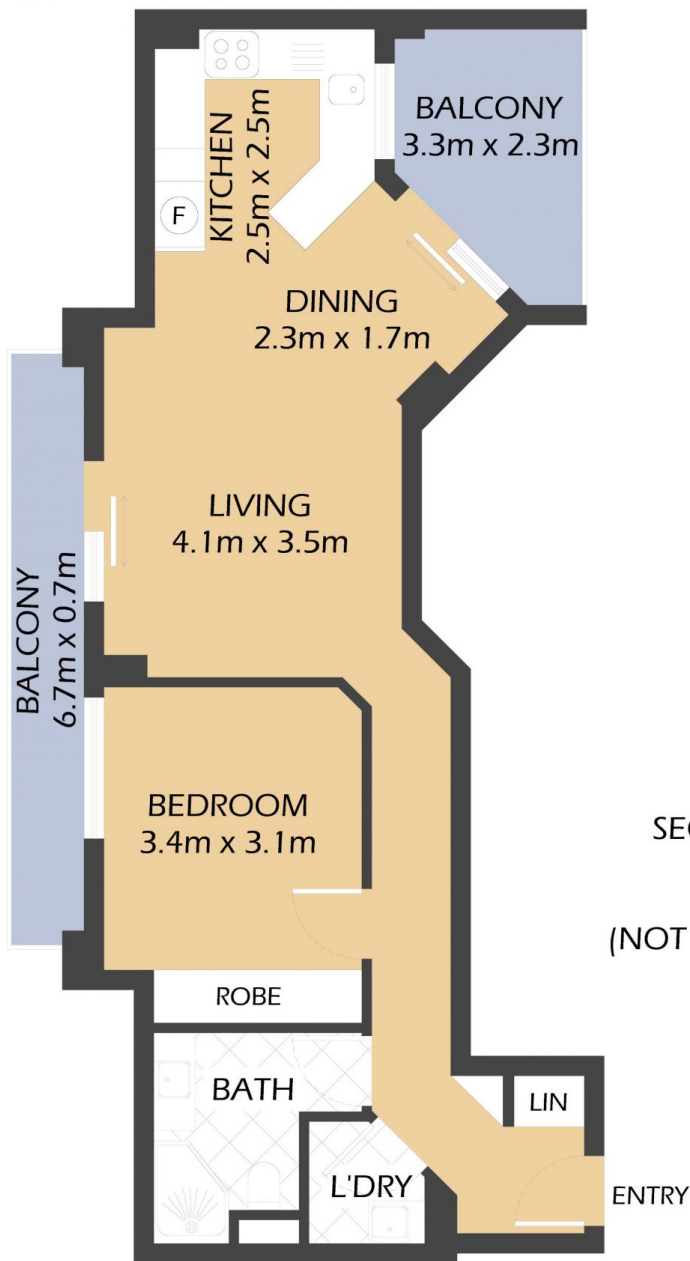
Price : SOLD \$820,000
Building Size : 78 sqm
View : <https://www.balmainrealty.com/1P3681>



Scott Robertson
(02) 9818 8888



Nick Van Venrooy
(02) 9818 8888



SECURE UNDERCOVER
CAR SPACE
4.9m x 3.0m
(NOT ACTUAL LOCATION)



305/28 WARAYAMA PLACE
ROZELLE
"Crestview" – Balmain Shores



*FLOOR PLAN MEASUREMENTS ARE APPROXIMATE AND FOR ILLUSTRATIVE PURPOSES ONLY.

PROPERTY DETAILS

AREA	
Total	78sqm
Internal	54sqm
External	9sqm
Parking	15sqm
OUTGOINGS	
Strata	\$1297p/q
Council	\$353p/q
Water	\$173p/q

BALMAINRealty

9818 8888

BALMAINREALTY.COM