

206/30 Warayama Place Rozelle NSW

3 2 2

Situated within the harbour-side enclave of 'Balmain Shores', this magnificent three bedroom apartment features spacious open plan interiors with a sun-filled northerly aspect and a large wrap around balcony taking in water views.

Located just a short stroll to express public transport and an abundance of cafes, restaurants, wine bars, pubs, boutique shopping and local schools, with waterfront parkland including Bridgewater Park & the Bay Run right on your doorstep.

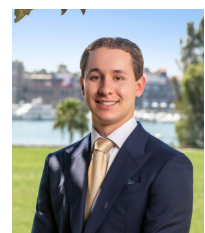
PROPERTY FEATURES:

- Immaculately maintained interiors with plush carpet, plantation shutters and blinds
- Wrap around entertainer's balcony taking in a sun-filled

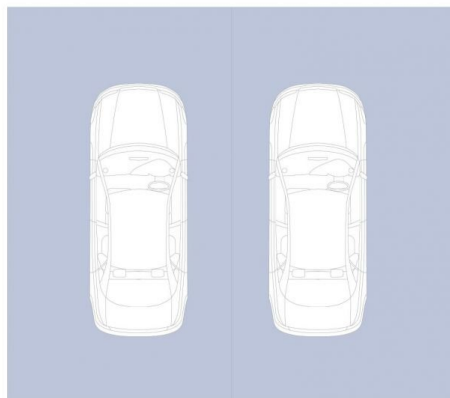
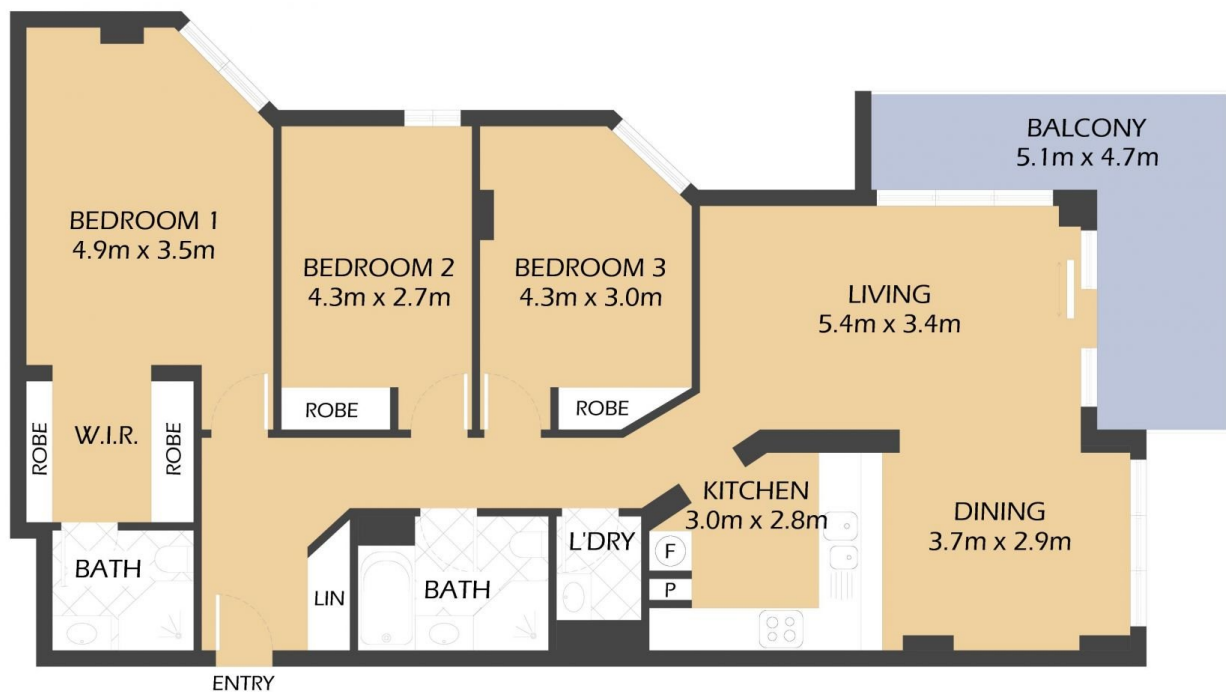
Price : SOLD
Building Size : 151 sqm
View : <https://www.balmainrealty.com/1P3698>



Scott Robertson
 (02) 9818 8888



Nick Van Venrooy
 (02) 9818 8888



SECURE UNDERCOVER
CAR SPACES
6.3m x 5.6m
(NOT ACTUAL LOCATION)



206/30 WARAYAMA PLACE ROZELLE "Anchorage" – Balmain Shores



*FLOOR PLAN MEASUREMENTS ARE APPROXIMATE AND FOR ILLUSTRATIVE PURPOSES ONLY.

PROPERTY DETAILS

AREA

Total	151sqm
Internal	105sqm
External	12sqm
Parking	34sqm

OUTGOINGS

Strata	\$1995p/q
Council	\$338p/q
Water	\$159p/q

BALMAINRealty

9818 8888

BALMAINREALTY.COM