



201/41 Terry Street Rozelle NSW

1 1 1

This over-sized studio apartment found within the popular 'Atelier' complex is situated just a moments stroll from Darling Street 's buzzing wine bars, cafes, restaurants & pubs, with express public transport on your doorstep as well as the 'Bay Run' along the harbour foreshore.

**Price** : \$600 per week  
**Building Size** : 64 sqm  
**View** : <https://www.balmainrealty.com/1P3706>

#### PROPERTY FEATURES:

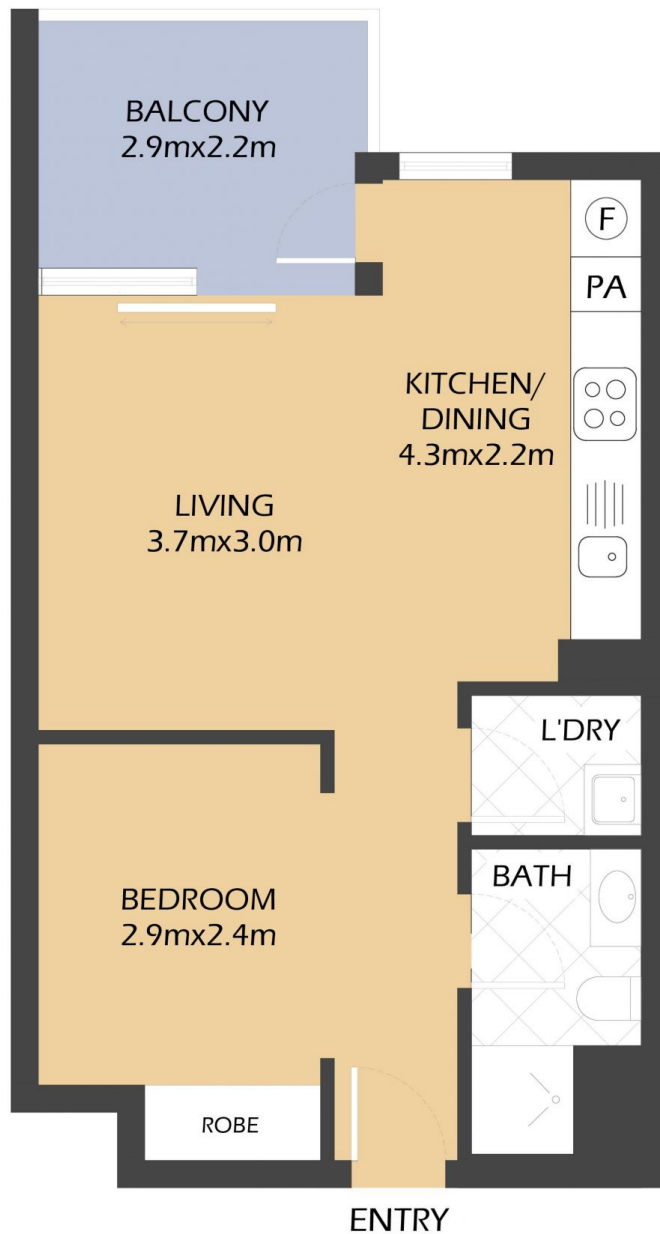
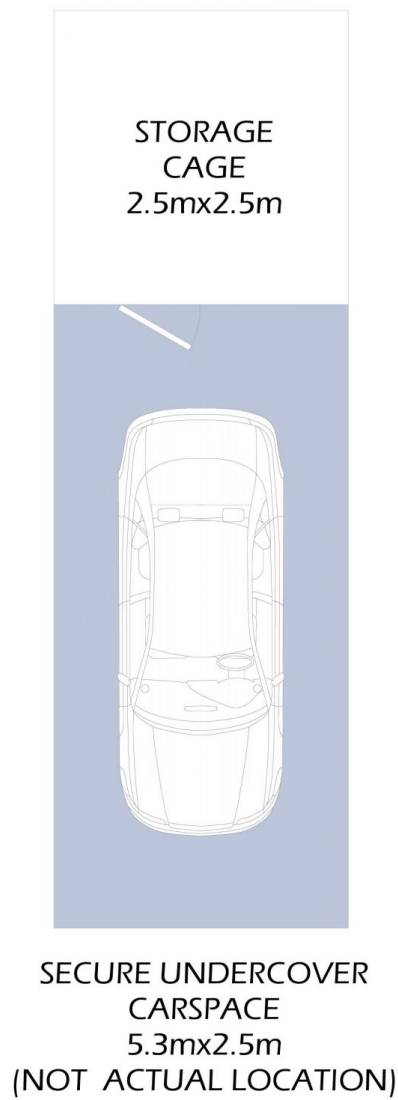
- Spacious open plan living that opens directly onto the balcony
- Modern kitchen featuring granite benchtops, pull out pantry & stainless steel appliances including gas cooktop, oven, rangehood & dishwasher
- Reverse cycle air-conditioning to the living area
- Large bedroom area with mirrored built-in wardrobes
- Stylish bathroom with shower
- Separate internal laundry with clothes dryer



**Eli Gallwey**  
**(02) 9818 8888**



**Suzanne MacMillan**  
**(02) 9818 8888**



201/41 TERRY STREET  
ROZELLE  
'Atelier'



PROPERTY DETAILS	
<b>AREA</b>	
Total	64sqm
Internal & External	45sqm
Parking & Storage	19sqm
<b>OUTGOINGS</b>	
Strata	\$685pq
Council	\$331pq
Water	\$150pq

\*FLOOR PLAN MEASUREMENTS ARE APPROXIMATE AND FOR ILLUSTRATIVE PURPOSES ONLY.