



409/5 Warayama Place Rozelle NSW

2 2 1

Situated in the prized 'Balmain Shores' complex, this elevated apartment offers an ideal layout with the bedrooms at each end separated by the living with a private and leafy outlook. The property features spacious open plan design with freshly painted interiors and timber flooring throughout.

Residents have access to resort style amenities including a modern well-equipped gymnasium, heated indoor lap pool, outdoor plunge pool, spa & saunas. It's also on the door step of Bridgewater Park and the popular 'Bay Run', and is only a short stroll from local cafes & eateries, Fruitologist, Recco Lab and express public transport.

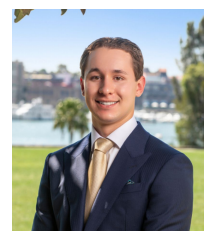
PROPERTY FEATURES:

- Freshly painted interiors and timber flooring throughout

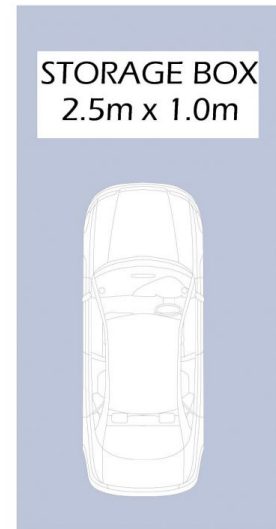
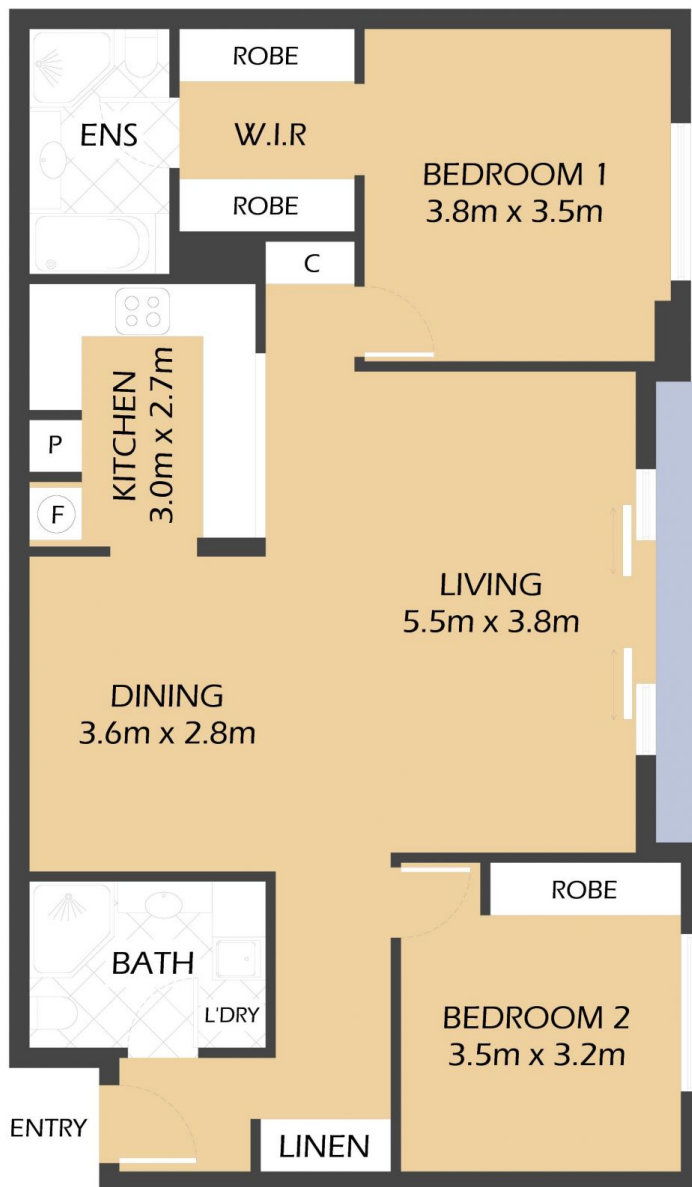
Price : SOLD
Building Size : 116 sqm
View : <https://www.balmainrealty.com/1P3699>



Scott Robertson
 (02) 9818 8888



Nick Van Venrooy
 (02) 9818 8888



409/5 WARAYAMA PLACE
ROZELLE
"Mariners View" – Balmain Shores



*FLOOR PLAN MEASUREMENTS ARE APPROXIMATE AND FOR ILLUSTRATIVE PURPOSES ONLY.

PROPERTY DETAILS

AREA	
Total	116sqm
Internal	87sqm
External	10sqm
Parking	19sqm
OUTGOINGS	
Strata	\$1575p/q
Council	\$353p/q
Water	\$173p/q

BALMAINRealty

9818 8888

BALMAINREALTY.COM