



23 West End Lane Ultimo NSW

3 2 1

This North facing renovated three bedroom terrace style townhouse is flooded with natural light and offers the complete package with generous living over three levels, balconies on every floor and a lock-up garage with internal access.

A short walking distance to cafes, wine bars and various dining options, UTS University, Broadway Shopping Centre, Victoria Park Pool and local Markets.

PROPERTY FEATURES:

- North facing living set on a quiet laneway
- Kitchen features stainless steel gas cooking & dishwasher, leading onto an atrium-style meals area offering indoor/outdoor flow
- Light filled separate lounge & dining areas

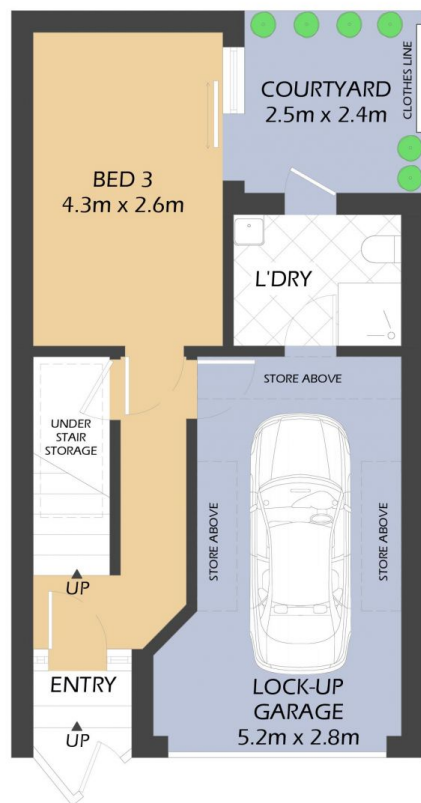
Price : \$1,150 per week
Building Size : 135 sqm
View : <https://www.balmainrealty.com/1P3720>



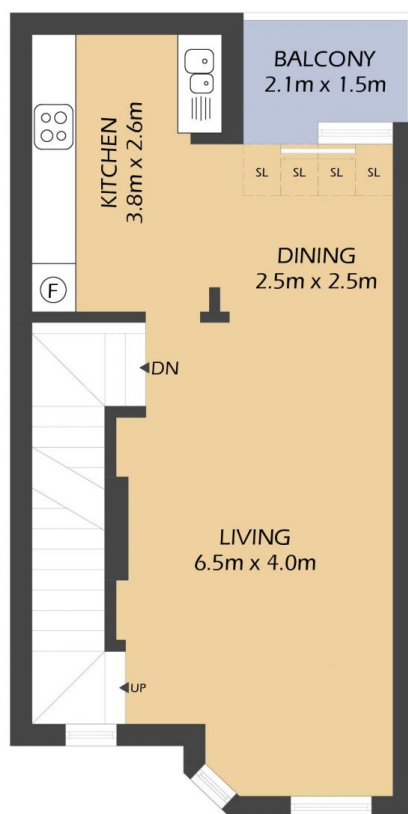
Eli Gallwey
(02) 9818 8888



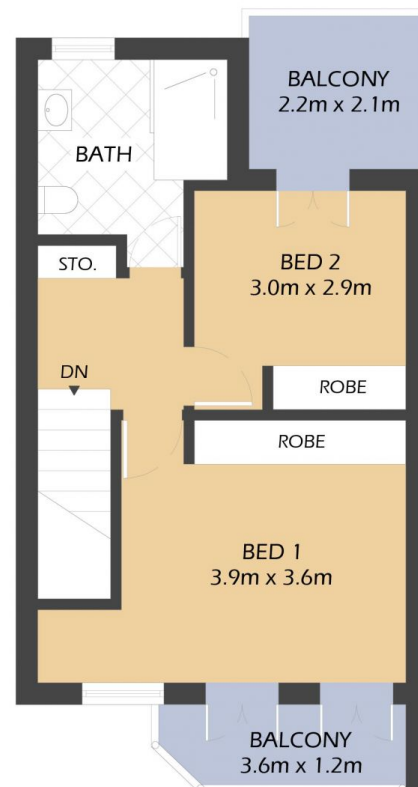
Aimee Ryan
9818 8888



GROUND FLOOR



FIRST FLOOR



SECOND FLOOR

23 WEST END LANE

ULTIMO



*FLOOR PLAN MEASUREMENTS ARE APPROXIMATE AND FOR ILLUSTRATIVE PURPOSES ONLY.

PROPERTY DETAILS

AREA

Total	135sqm
Ground Floor	48sqm
First Floor	45sqm
Second Floor	42sqm

OUTGOINGS

Strata	\$462p/q
Council	\$273p/q
Water	\$232p/q

BALMAINRealty

9818 8888

BALMAINREALTY.COM