



104/28 Warayama Place Rozelle NSW

1 1

Property Features:

- Timber style flooring throughout, Air-Conditioning in living area
- Spacious open plan living/dining area which flows onto a sun-filled private courtyard with own planter box garden
- Gourmet kitchen features granite benchtops, pantry, gas cooktop, oven, rangehood & dishwasher
- Large bedroom with mirrored floor to ceiling built-in wardrobes
- Well appointed bathroom, separate internal laundry with clothes dryer
- Roller blinds throughout
- Security building with intercom & on-site building manager, lift access & push bike storage in basement

Price

: \$620 Per Week

Land Size

: 72 sqm

View

: <https://www.balmainrealty.com/1P3722>



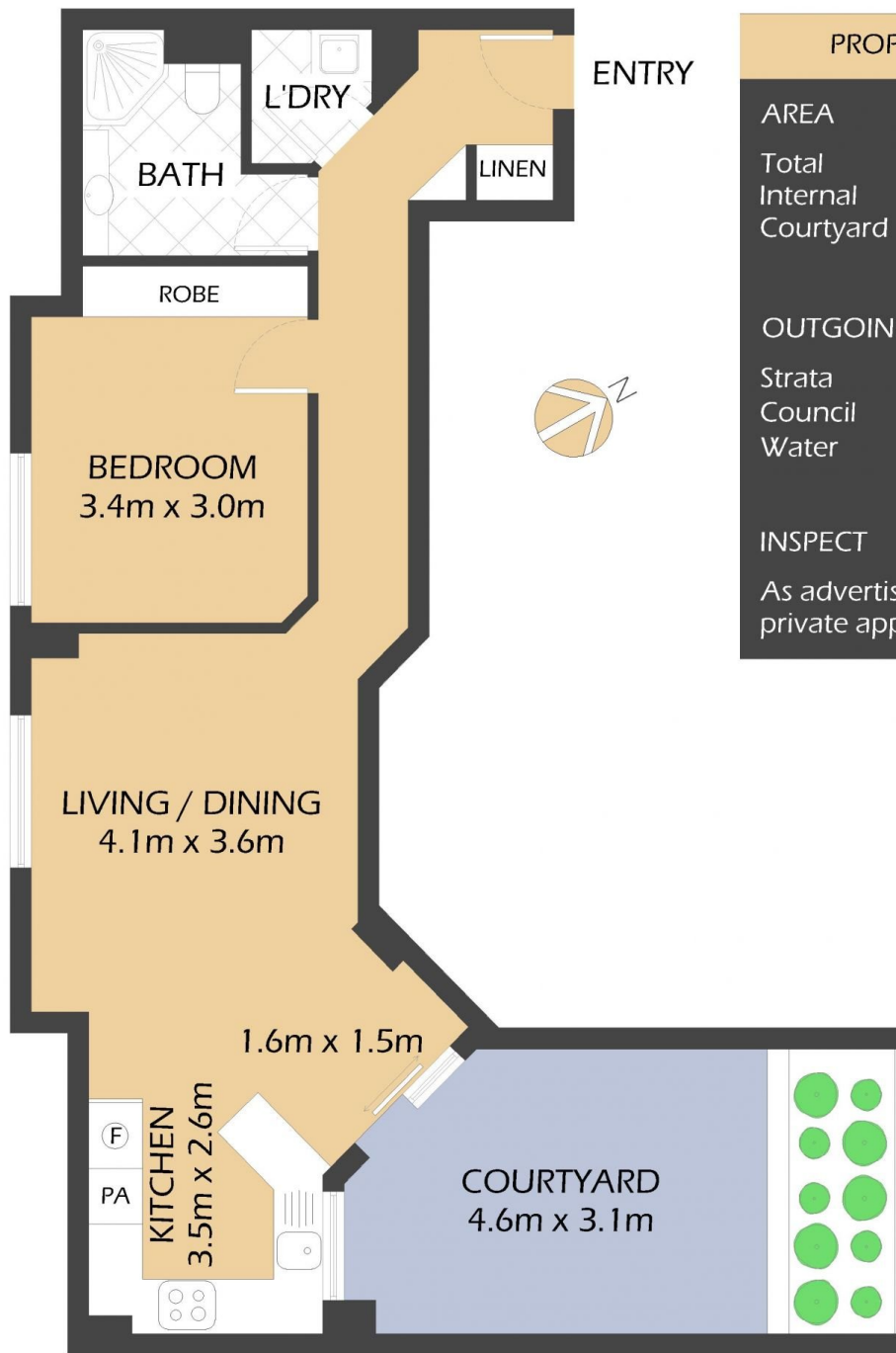
Eli Gallwey
(02) 9818 8888



Aimee Ryan
9818 8888

Lifestyle Features:

<https://www.balmainrealty.com>



PROPERTY DETAILS	
AREA	
Total	72sqm
Internal	54sqm
Courtyard	18sqm
OUTGOINGS	
Strata	\$1006p/q
Council	\$331p/q
Water	\$151p/q
INSPECT	
As advertised or by private appointment.	

104/28 WARAYAMA PLACE
ROZELLE

"Crestview" - Balmain Shores

*FLOOR PLAN MEASUREMENTS ARE APPROXIMATE AND FOR ILLUSTRATIVE PURPOSES ONLY.

BALMAINRealty

9818 8888
BALMAINREALTY.COM