



**501/30 Warayama Place Rozelle NSW**

2 2 2

#### PROPERTY FEATURES:

- Spacious open plan living and dining
- Large entertaining balcony with water views
- Main bedroom with mirrored built-in wardrobes & ensuite bathroom
- Modern kitchen with stainless steel appliances, gas cooking & dishwasher
- Internal laundry with clothes dryer
- Ducted air-conditioning throughout
- Security parking for 2 vehicles with direct lift access to apartment level
- Short distance from the CBD, ideal location for public transport with express buses to the city
- Access to resort facilities including indoor lap pool, outdoor plunge pool, well equipped gymnasium, spa & sauna

**Price** : \$1050 per week

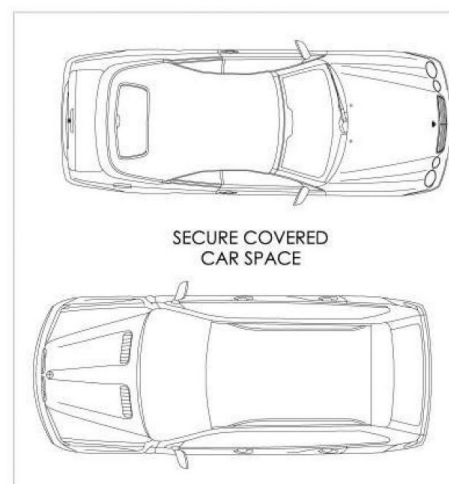
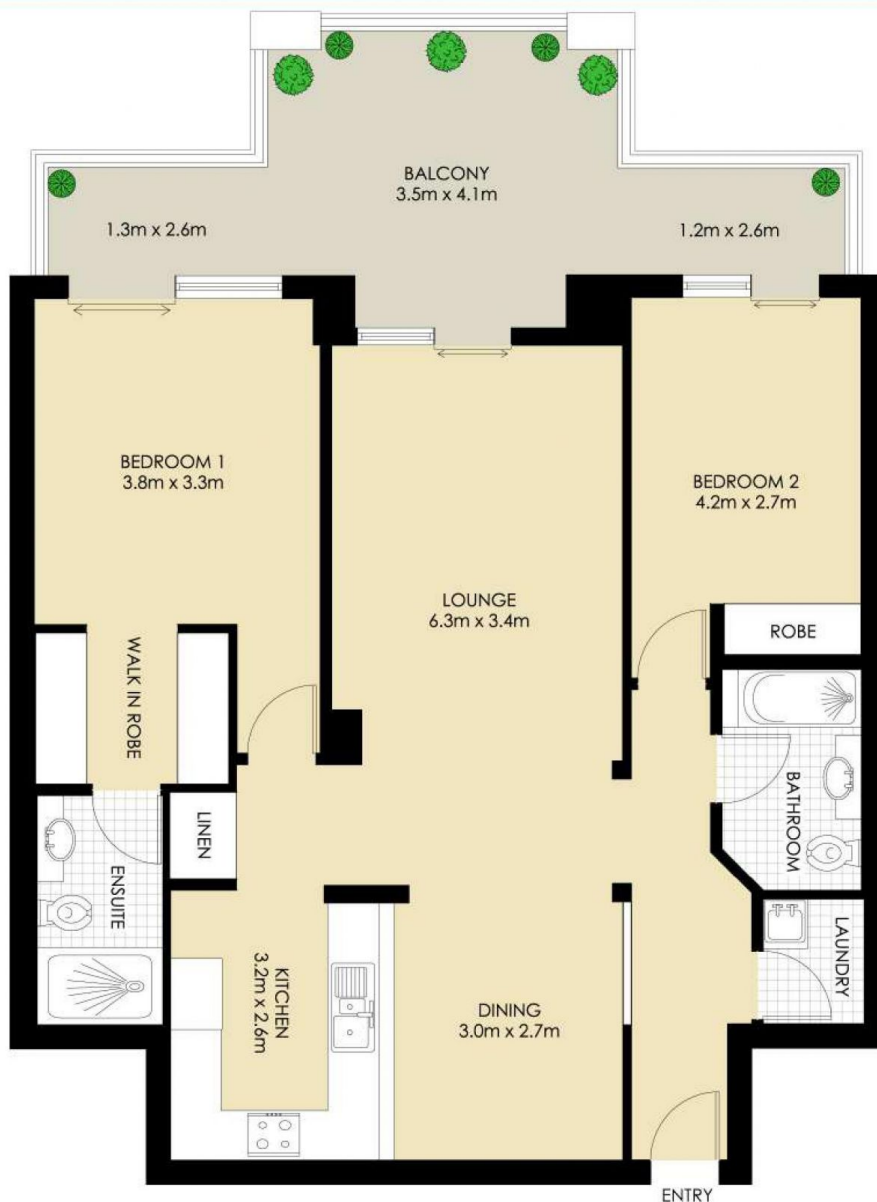
**View** : <https://www.balmainrealty.com/1P3724>



**Eli Gallwey**  
**(02) 9818 8888**



**Aimee Ryan**  
**9818 8888**



(NOT ACTUAL LOCATION)

\*PLANS SHOWN ONLY INDICATIVE OF LAYOUT. DIMENSIONS ARE APPROXIMATE.