



401/112 Elliott Street Balmain NSW

3 2 3

Situated within the highly acclaimed 'Harbourfront Balmain' development completed in late 2017, live the high life in this unique Penthouse residence perched atop the tightly held 'Bayswater' building on the Balmain foreshore.

A superb entertainer with over 225sqm of space, the crowning glory of this three-bedroom apartment is the wrap around terrace on three sides with stunning panoramic harbour views from every room.

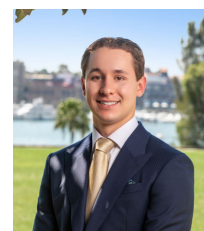
A house-like layout features spacious living and entertaining areas, a private master suite and ducted air-conditioning for year-round comfort. With easy level lift access from a private foyer to triple garaging and storage.

Residents have access to a private waterfront garden area featuring BBQ facilities, infinity swimming pool & a well

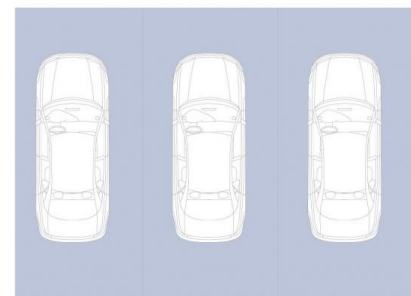
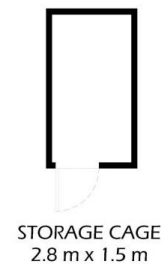
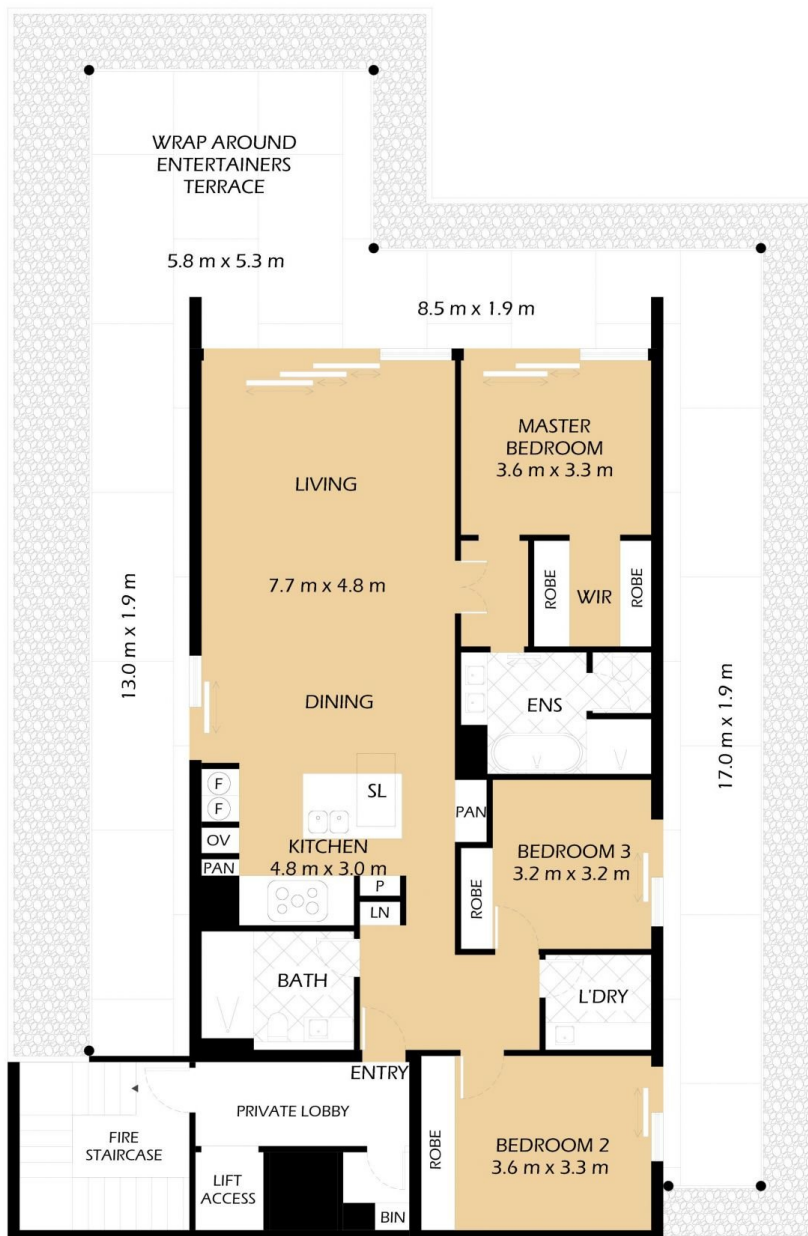
Price : Contact Agent
Building Size : 270 sqm
View : <https://www.balmainrealty.com/1P3761>



Scott Robertson
(02) 9818 8888



Nick Van Venrooy
(02) 9818 8888



SECURE UNDERCOVER CAR SPACES
7.5 m x 5.5 m
(NOT ACTUAL LOCATION)

401/112 ELLIOTT STREET BALMAIN

'Bayswater' - Harbourfront Balmain



*FLOOR PLAN MEASUREMENTS ARE APPROXIMATE AND FOR ILLUSTRATIVE PURPOSES ONLY.

PROPERTY DETAILS

AREA	
Total	270 sqm
Internal & External	225 sqm
Parking	42 sqm
Storage Cage	3 sqm

OUTGOINGS

Strata	\$4,871 pq
Council	\$439 pq
Water	\$173 pq

BALMAINRealty

9818 8888

BALMAINREALTY.COM