



**510/11 Warayama Place Rozelle NSW**

1 🏠 1 🚗

## PROPERTY FEATURES:

- Bright & sunny top floor position with stunning north-easterly water views across Iron Cove Bay
- Open plan living & large balcony looking out over Bridgewater Park
- Split-system air-conditioning
- Flyscreen on balcony door
- Carpet throughout
- Security access with video intercom
- Gourmet kitchen with gas cooking & dishwasher
- Bedroom with built-in wardrobes
- Stylish modern bathroom
- Separate internal laundry with clothes dryer
- Secure undercover car space with direct lift access to apartment

**Price** : \$620 Per Week

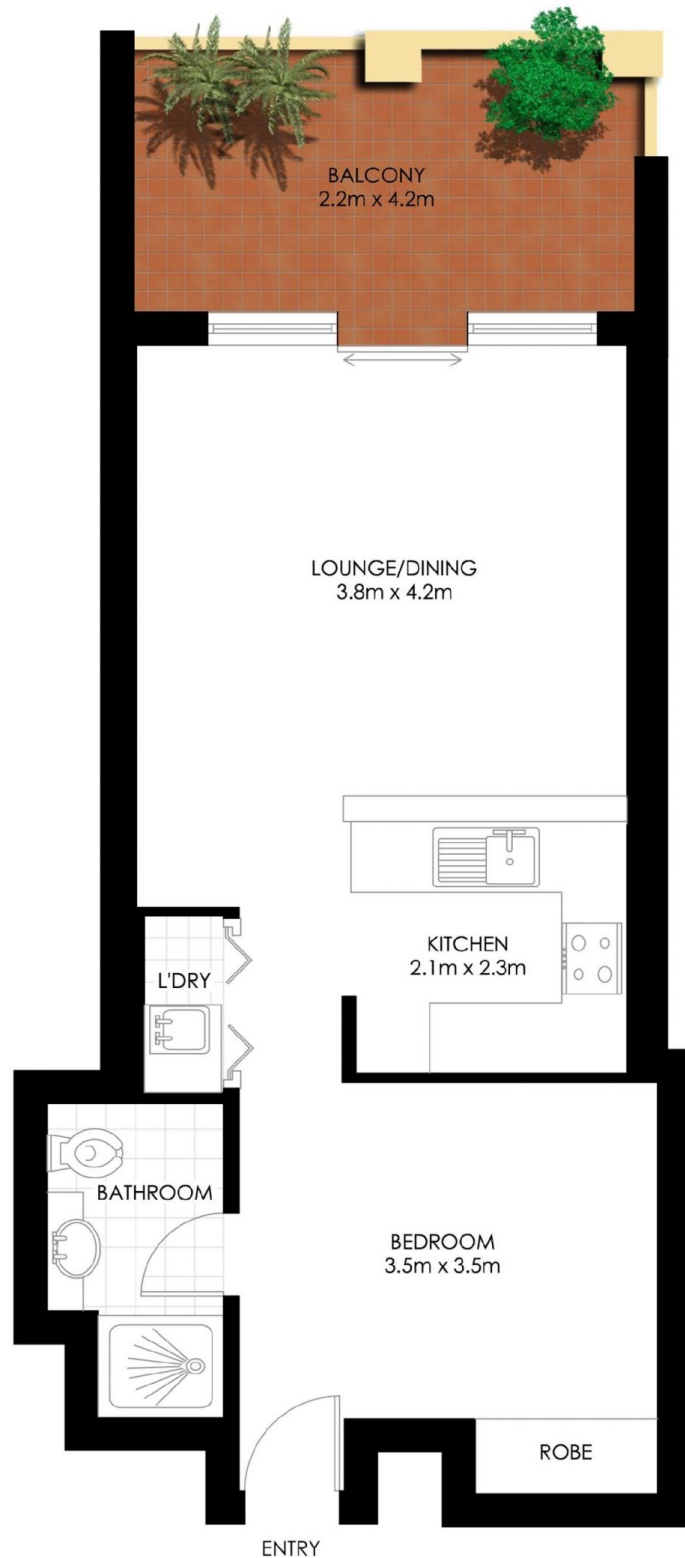
**View** : <https://www.balmainrealty.com/1P3766>



**Eli Gallwey**  
(02) 9818 8888



**Suzanne MacMillan**  
(02) 9818 8888



## ROZELLE 11 WARAYAMA PLACE "North Point" - Balmain Shores

\*PLANS SHOWN ONLY INDICATIVE OF LAYOUT. DIMENSIONS ARE APPROXIMATE.