

Actual View



37/3 Wulumay Close Rozelle NSW

3 2 2

Superb luxury from a tranquil north facing harbourfront location, boasting an elevated and panoramic harbour outlook from the top floor of 'The Landings' in the renowned 'Balmain Cove' complex with a generously sized open plan living area merging with a private entertainer's balcony.

PROPERTY FEATURES:

- Spacious open plan living with timber floors that flows effortlessly to a well appointed balcony with automated Vergola louvre shutters to angle sunshine & light and offer year round protection from the elements
- Gourmet kitchen with large pantry and stainless European appliances
- Ducted air-conditioning throughout
- King sized master bedroom is carpeted with walk-in robes, en-suite with spa bath & separate shower

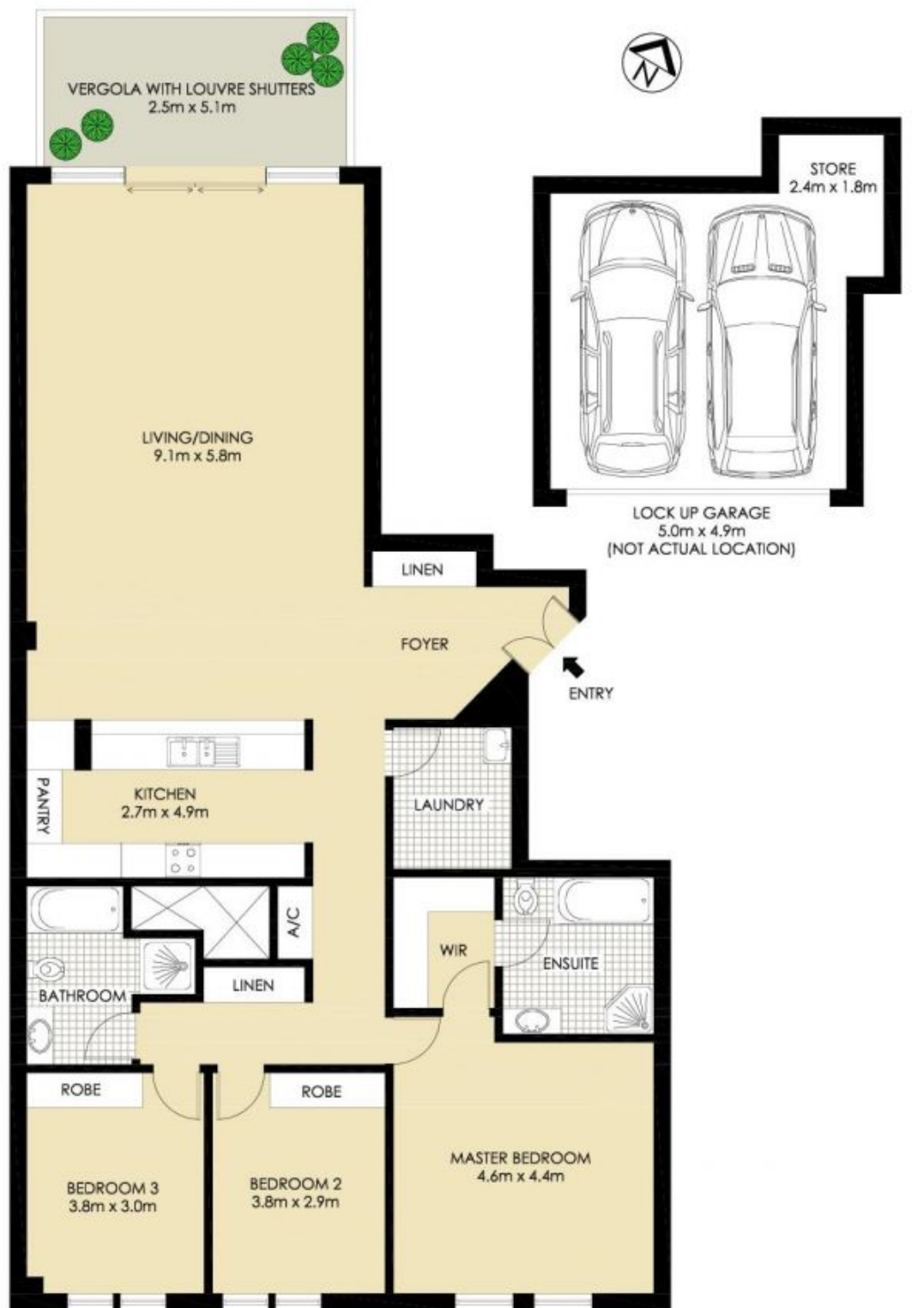
Price : \$1,550 per week
Building Size : 196 sqm
View : <https://www.balmainrealty.com/1P3772>



Eli Gallwey
(02) 9818 8888



Suzanne MacMillan
(02) 9818 8888



ROZELLE
37/3 WULUMAY CLOSE
"The Landings" - Balmain Cove

*PLANS SHOWN ONLY INDICATIVE OF LAYOUT. DIMENSIONS ARE APPROXIMATE.