



**103/8 Yara Avenue Rozelle NSW**

1 1 1

## Property Features:

- Air conditioning in living and dining area
- Spacious open plan interiors that open on to your own 14 sqm private garden courtyard
- Generous sized bedroom with mirrored his and hers built-in wardrobes & direct access onto courtyard
- Stylishly appointed kitchen featuring gas cooktop, rangehood & dishwasher
- Stylish bathroom with separate internal laundry
- One secure car space with lift access to the apartment
- Level walk-in access to apartment via security door
- Positioned on level 1 of 4 levels
- Security building with intercom and electronic key card access

**Price** : \$690 per week

**View** : <https://www.balmainrealty.com/1P3783>



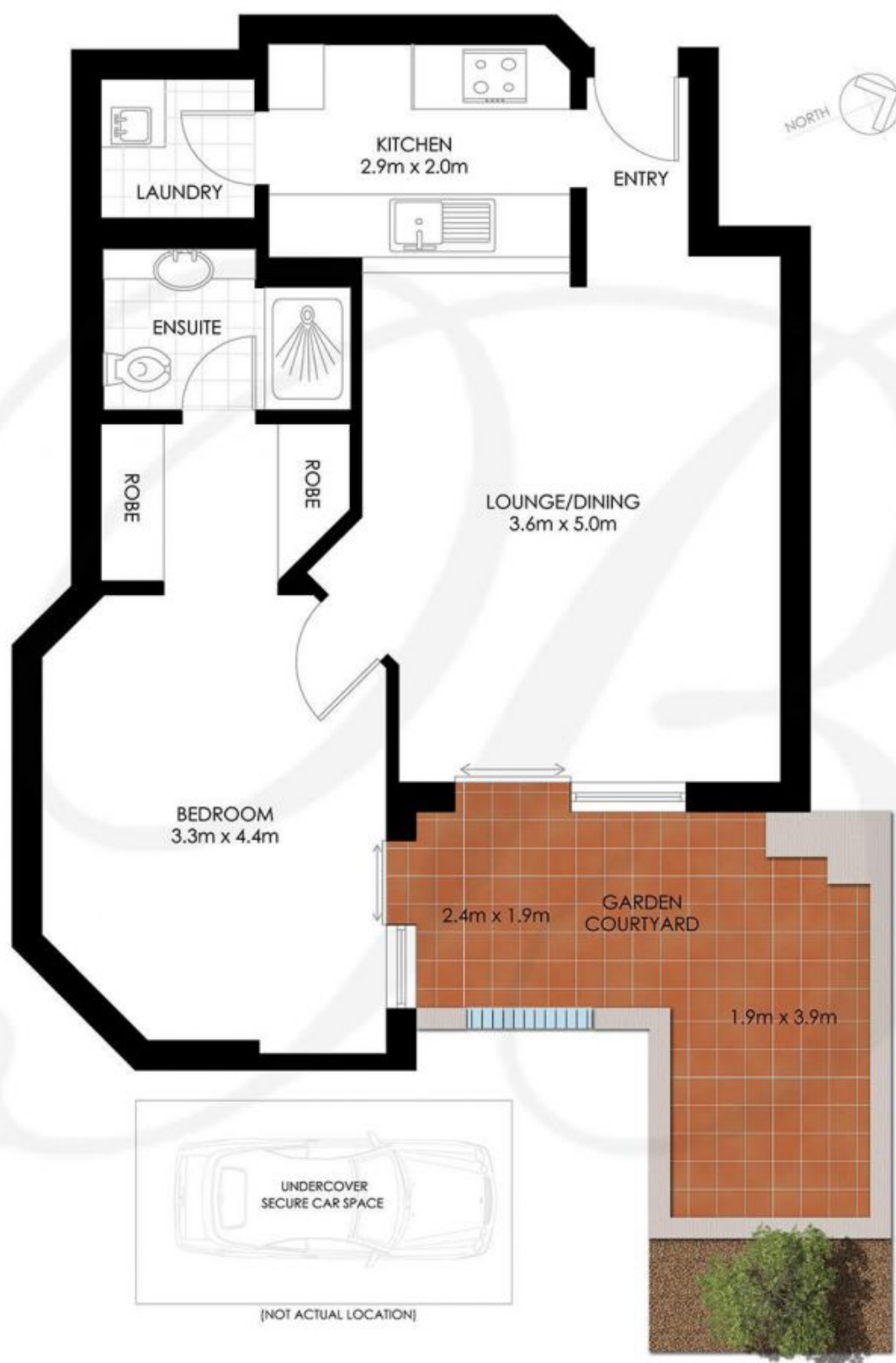
**Eli Gallwey**  
(02) 9818 8888



**Aimee Ryan**  
9818 8888

## Lifestyle Features:

<https://www.balmainrealty.com>



**ROZELLE**  
103/8 YARA AVENUE  
"Pinnacle" - Balmain Shores

\*PLANS SHOWN ONLY INDICATIVE OF LAYOUT. DIMENSIONS ARE APPROXIMATE.