



29/3 Wulumay Close Rozelle NSW

2 2 2

Set within the tightly held 'Balmain Cove' complex and positioned on the absolute waterfront of 'The Landings' building, this oversized ground floor apartment offers spacious & luxurious refurbished interiors which flow onto a large and supremely private outdoor courtyard with direct gate access to the waterfront & marina facilities for the boating enthusiast.

Just 4kms from the CBD and just a short stroll from express city transport, schools, neighbourhood restaurants, cafes & shops along with Darling Street's renowned retail strip.

PROPERTY FEATURES:

Type : Apartment
Price : SOLD \$3,600,000
Building Size : 236 sqm
View : <https://www.balmainrealty.com/1P3820>



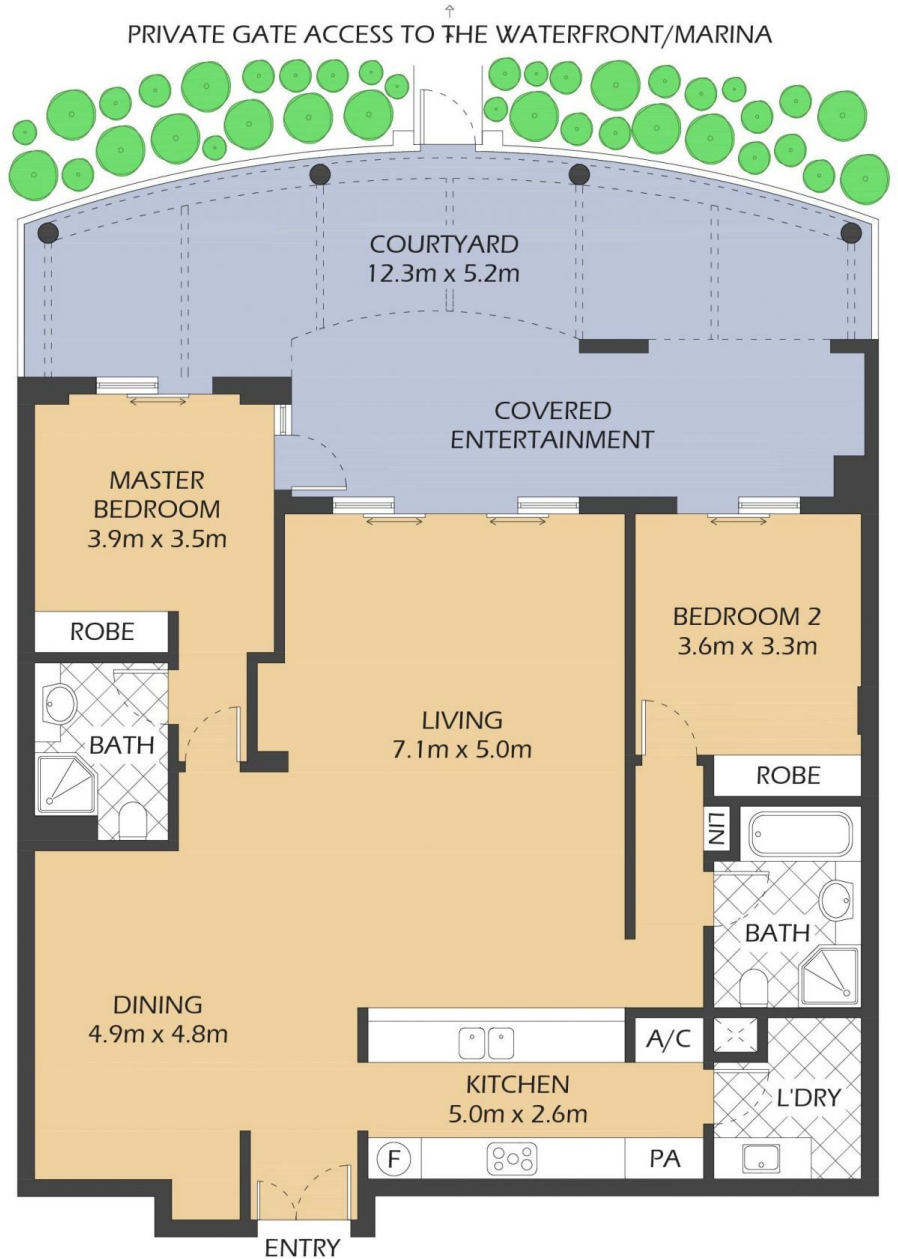
Scott Robertson
(02) 9818 8888



Nick Van Venrooy
(02) 9818 8888

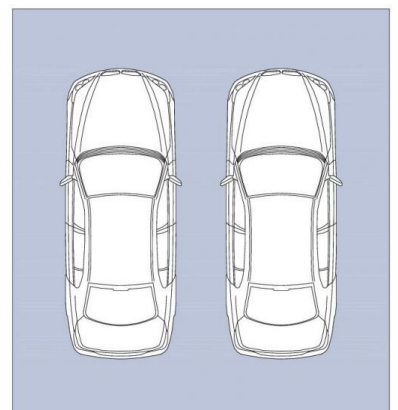
[For full version visit the website](https://www.balmainrealty.com)

PROPERTY DETAILS	
AREA	
Total	236sqm
Internal & External	204sqm
Lock Up Garage	32sqm
OUTGOINGS	
Strata	\$4,427p/q
Council	\$353p/q
Water	\$172p/q
INSPECT	
As advertised or by private appointment.	



29/3 WULUMAY CLOSE ROZELLE

"The Landings" - Balmain Cove



DOUBLE LOCK UP GARAGE
5.9m x 5.5m
(NOT ACTUAL LOCATION)

0.5m 1m 2m 5m

* FLOOR PLAN MEASUREMENTS ARE APPROXIMATE AND FOR ILLUSTRATIVE PURPOSES ONLY.

BALMAINRealty

9818 8888
BALMAINREALTY.COM