



211/43 Terry Street Rozelle NSW

1 1 1

Set in the highly sought after 'Atelier' complex this one bedroom apartment features modern interiors, air-conditioning, secure parking with an additional lock up storage cage.

Type : Apartment

Price : \$650 per week

View : <https://www.balmainrealty.com/1P3845>

Located just a moments stroll to Bridgewater Park & the Bay Run, express public transport with the convenience of neighbourhood shops including a gourmet grocer & cafe, barber, day spa & bottle shop.



Eli Gallwey
(02) 9818 8888



Aimee Ryan
9818 8888

Property Features:

- New paint and carpet throughout
- Open plan living/dining which flows onto a covered balcony

[For full version visit the website](https://www.balmainrealty.com)



PROPERTY DETAILS

AREA

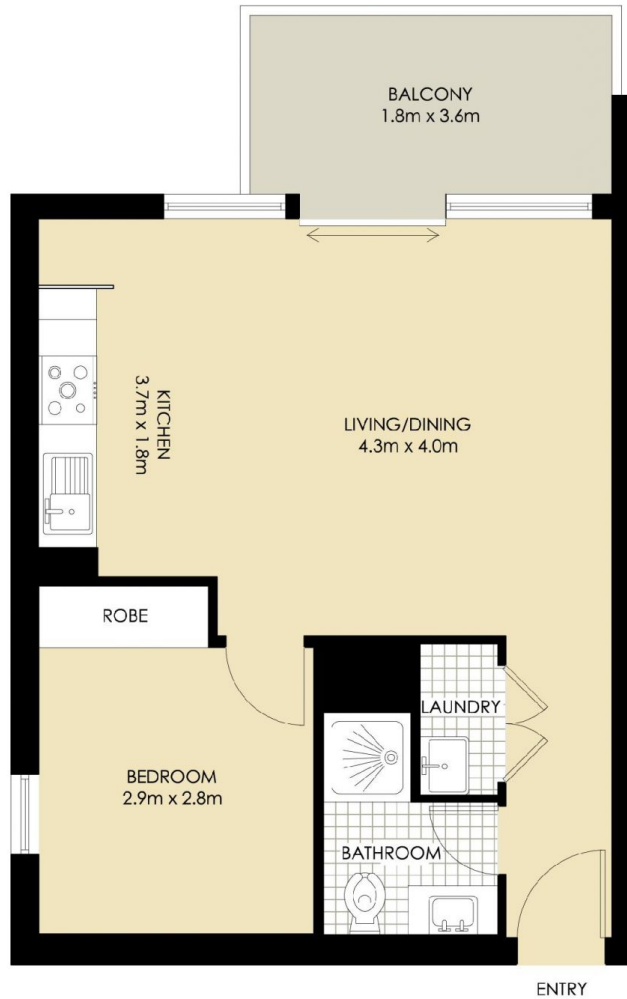
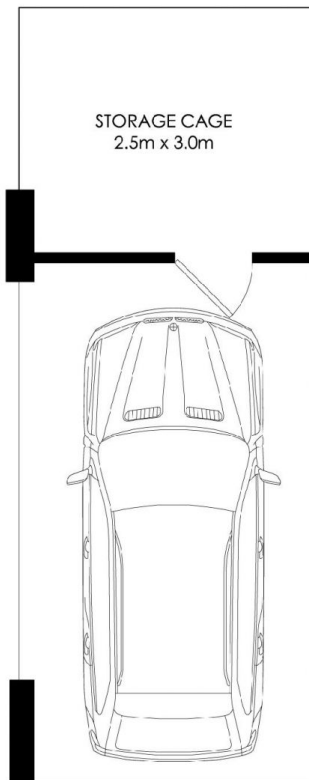
Total	71sqm
Internal & Balcony	48sqm
Car Space & Storage	23sqm

OUTGOINGS

Strata	\$733pq
Council	\$297pq
Water	\$172pq

INSPECT

As advertised or by appointment



ROZELLE
211/43 TERRY STREET
"Atelier"



*PLANS SHOWN ONLY INDICATIVE OF LAYOUT. DIMENSIONS ARE APPROXIMATE.

BALMAIN Realty

1300 REALTY
9818 8888
balmainrealty.com