



26/1 Wulumay Close Rozelle NSW

3 2 1

Set within the 'The Poolsides' of the highly sought after Balmain Cove waterfront complex, this stunning oversized executive apartment features sun-filled interiors that open out to a generous north facing balcony, perfect for year-round alfresco dining, plus it offers an additional private balcony off the master suite.

Located approximately 4kms from Sydney CBD and only a short stroll from express city transport, waterfront parks & Bay Run, local schools, with an array of local eateries & shops literally on your doorstep.

PROPERTY FEATURES:

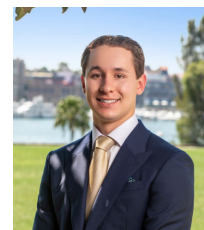
- Set within an exclusive low rise security building featuring

[For full version visit the website](https://www.balmainrealty.com)

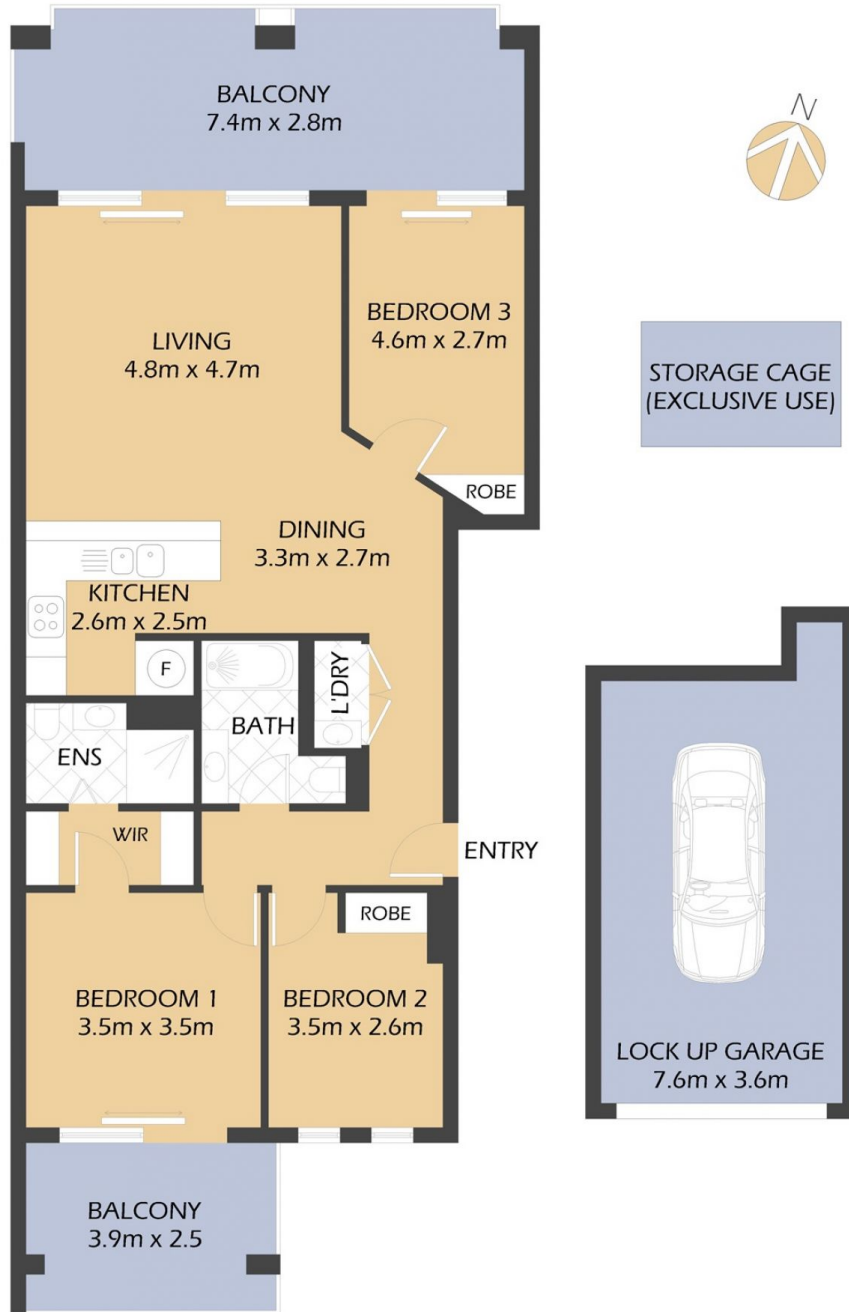
Type : Apartment
Price : SOLD OFF-MARKET \$1,875,000
Building Size : 141 sqm
View : <https://www.balmainrealty.com/1P3955>



Scott Robertson
(02) 9818 8888



Nick Van Venrooy
(02) 9818 8888



26/1 WULUMAY CLOSE
ROZELLE
 "The Poolsides" - Balmain Cove



*FLOOR PLAN MEASUREMENTS ARE APPROXIMATE AND FOR ILLUSTRATIVE PURPOSES ONLY.

PROPERTY DETAILS	
AREA	
Total	141sqm
Internal & External	119sqm
Lock Up Garage	22sqm
OUTGOINGS	
Strata	\$2,439p/q
Council	\$371p/q
Water	\$172p/q

BALMAINRealty

9818 8888

BALMAINREALTY.COM