



## 5/3 Wulumay Close Rozelle NSW

3 2 2

Set within the tightly held 'Balmain Cove' harbourfront complex and positioned on the absolute waterfront in 'The Landings' building, this exceptional oversized waterfront apartment is bathed in natural northern light and captures elevated and unobstructed views toward Birkenhead Point, Snapper, and Spectacle Islands and beyond.

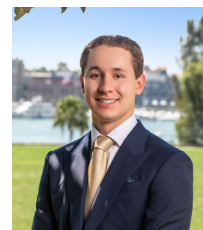
Featuring an elevated corner position with a highly sought after floor plan, the property features three well appointed bedrooms with the addition of a multi-purpose family room/home office/4th bedroom.

It offers peaceful resort style living with marina facilities for the boating enthusiast, as well as being a short stroll from an array of cafes, restaurants, boutique shopping, local

**Type** : Apartment  
**Price** : SOLD AT AUCTION \$5,950,000  
**Building Size** : 215 sqm  
**View** : <https://www.balmainrealty.com/1P3987>

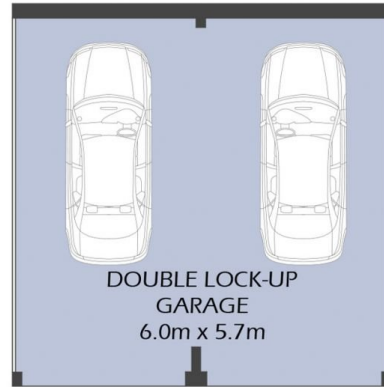
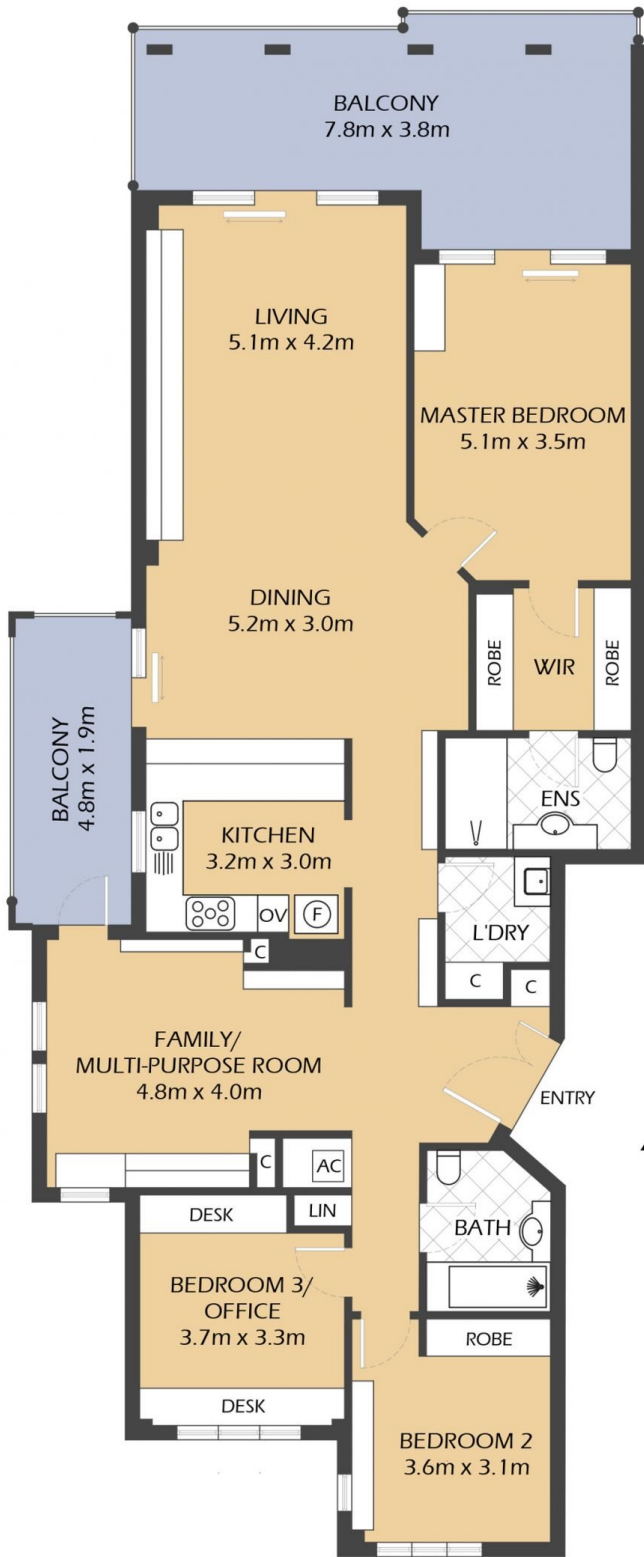


**Scott Robertson**  
(02) 9818 8888



**Nick Van Venrooy**  
(02) 9818 8888

[For full version visit the website](https://www.balmainrealty.com)



## 5/3 WULUMAY CLOSE ROZELLE

“The Landings” – Balmain Cove



\*FLOOR PLAN MEASUREMENTS ARE APPROXIMATE AND FOR ILLUSTRATIVE PURPOSES ONLY.

PROPERTY DETAILS	
<b>AREA</b>	
Total	215sqm
Internal & External	182sqm
Double Lock-up Garage	33sqm
<b>OUTGOINGS</b>	
Strata	\$4972p/q
Council	\$371p/q
Water	\$169p/q

# BALMAINRealty

9818 8888

BALMAINREALTY.COM