



2201/36 Baker Street Gosford NSW

3 2 2

Positioned high above Brisbane Water on Level 22 of the landmark 'The Waterfront - Central Coast Quarter' development, this luxurious sub-penthouse delivers an exceptional waterfront lifestyle with breathtaking panoramic views, premium finishes and exclusive resident amenities. One of only two residences on the level, it offers privacy, sophistication and effortless connection to Gosford's vibrant foreshore precinct.

Designed to maximise natural light and uninterrupted water outlooks, the residence showcases expansive open-plan interiors flowing seamlessly to a generous undercover entertaining balcony. From sunrise coffees to spectacular fireworks displays reflected across Brisbane Water, every detail of this home has been crafted to embrace its

Type : Apartment
Price : Buyers Guide \$3,750,000
Building Size : 151 sqm
View : <https://www.balmainrealty.com/1P4227>

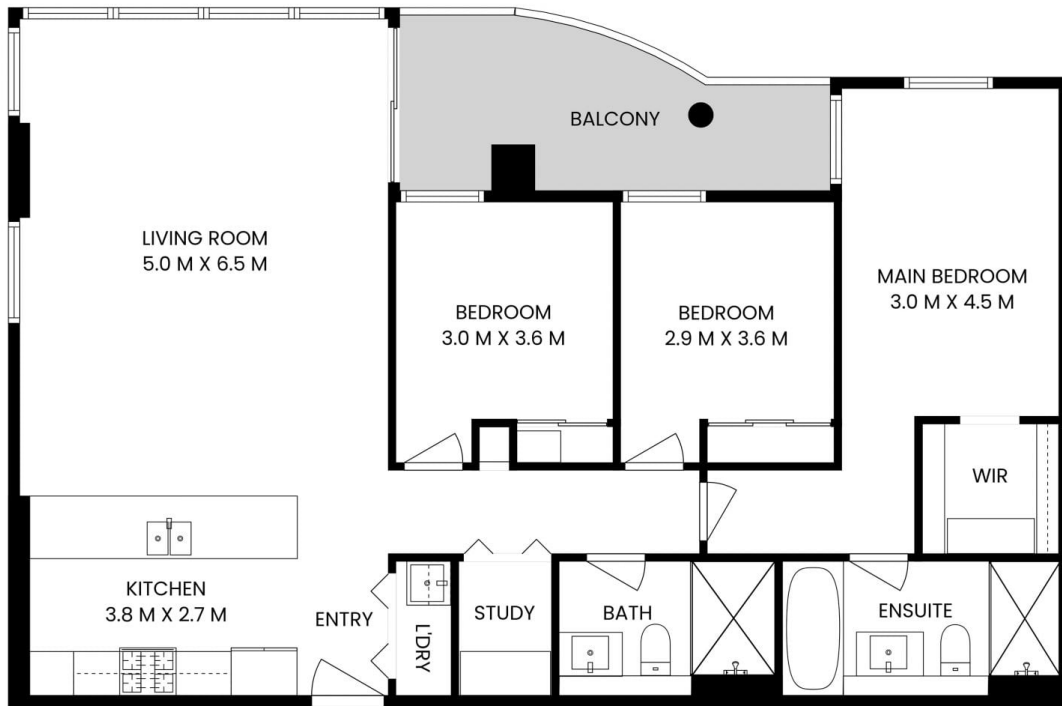


Scott Robertson
0409 827 911



Nick Van Venrooy
0497 888 123

[For full version visit the website](https://www.balmainrealty.com)



INTERNAL AREA : 113m²
 EXTERNAL AREA : 12m²

*FLOOR PLAN MEASUREMENTS ARE APPROXIMATE AND FOR ILLUSTRATIVE PURPOSES ONLY.

2201/36 Baker Street, Gosford

